



B500 Series

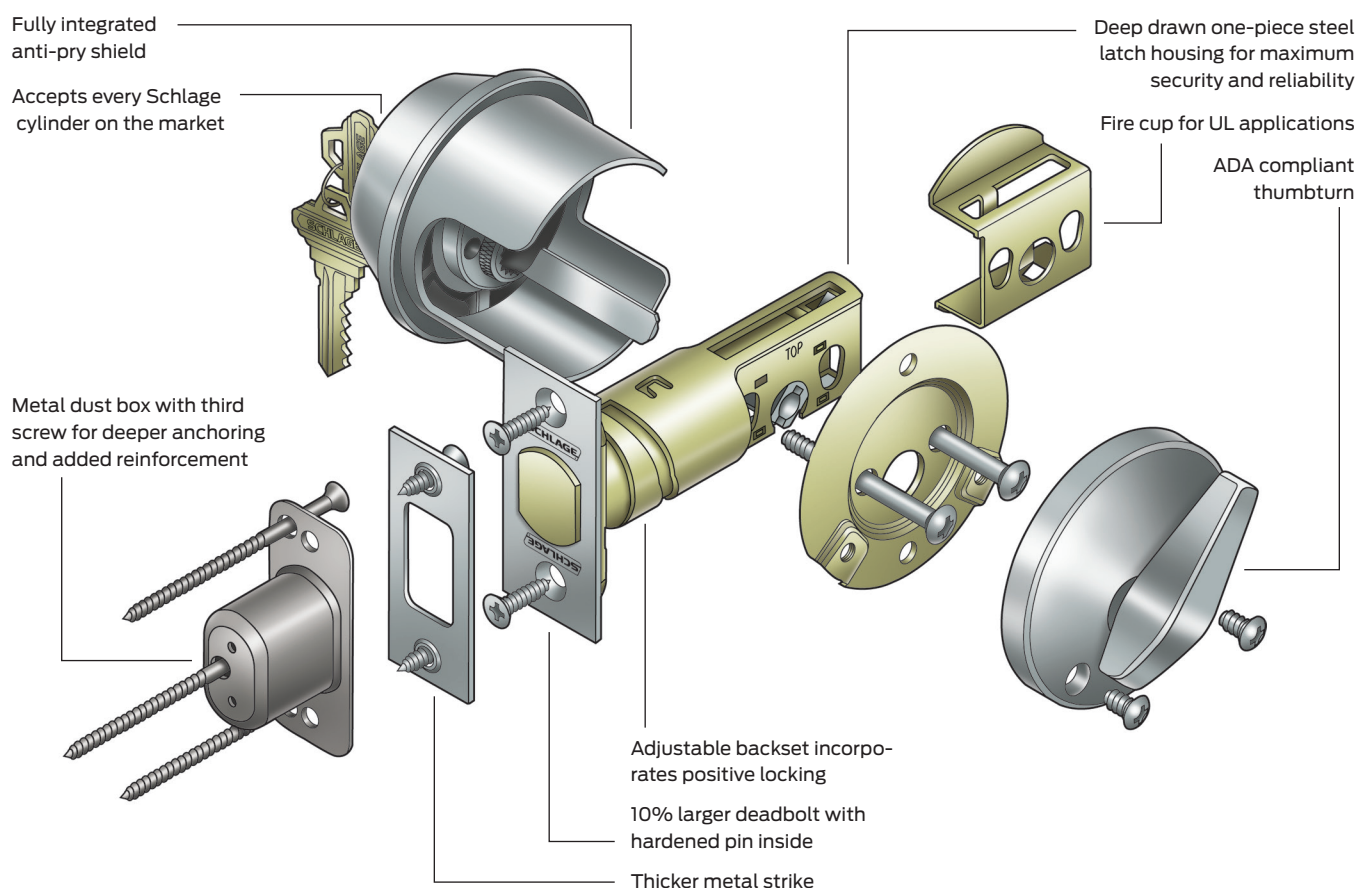
The B500 Series deadbolt is a revolutionary new deadbolt that delivers higher security, tougher performance and the ultimate in installation versatility.

Designed by locksmiths for locksmiths, the B500 Series deadbolt can be fitted with any Schlage cylinder, fits virtually every door you service, enhances lock strength on the jamb side of the door and will change forever the way you look at deadbolts.

Pictured here: B500 (Grade 2) deadbolt with ND Series Athens lever shown in 626 satin chrome

The best deadbolt ever designed by locksmiths

- Adjustable backset with lock-in-place helix design
- Integrated anti-pry shield protects latch
- Thicker metal security strike back-up on jamb side
- Security strike on jamb has third screw for stronger, deeper anchoring
- Added space inside strike box for true deadlatch
- Seamless steel latch construction along the entire length of the bolt housing
- 10% larger diameter deadbolt
- Zinc bolt with spinning hardened steel pin inside
- Tapered front housing that can't be unscrewed
- Integrated trim piece for fewer pieces out of the box
- Large, easy-to-use, ADA compliant thumbturn
- Meets UL 10B and UL 10C requirements



Deadbolt designs

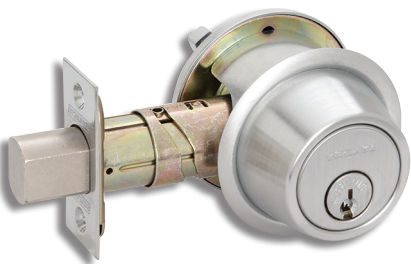
B500 Series

A versatile and economical Grade 2 deadbolt for medium duty commercial and heavy duty residential applications.

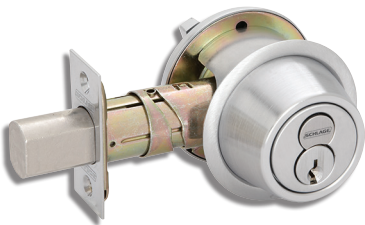
Furnished with conventional cylinder standard.

Available with Primus XP high security cylinder, Primus XP UL437 Listed high security cylinder, full size interchangeable core cylinder, Primus XP interchangeable core cylinder, or small format interchangeable core (SFIC) cylinder.

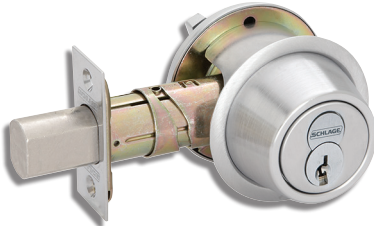
Fits 2 1/8" (54 mm) prep standard and anti-pry shield can be removed to fit 1 1/2" (38 mm) prep. See function charts for required cross bore dimensions.



Design shown in 626 satin chrome plated



Full size interchangeable core



Small format interchangeable core














Thumbturn for B500



B500 Series with occupied indicator (B571); 61-509 Emergency key included

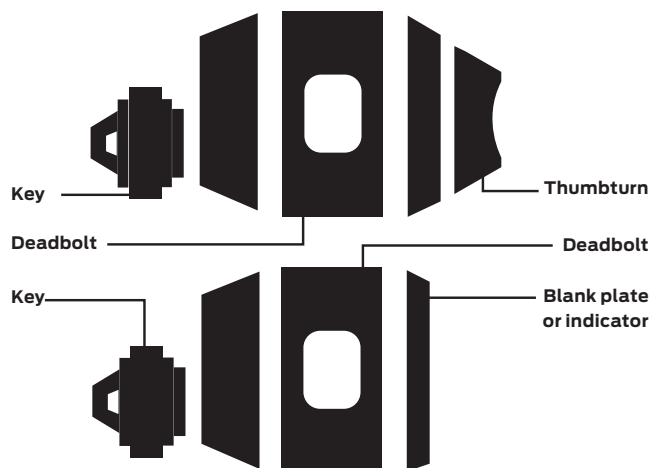
Deadbolt finishes

											
	605 Bright brass	606 Satin brass	609 Antique brass	612 Satin bronze	613 Oil rubbed bronze	619 Satin nickel	622 Matte black	625 Bright chromium plated	626 Satin chromium plated	626AM Anti-microbial coating	643e Aged bronze
Product											
B500

e = an equivalent finish to the BHMA standard.

Deadbolt functions

ANSI A156.36 bored deadbolt locks



Standard cylinder.



FSIC - full size interchangeable core option.



SFIC - small format interchangeable core option.



Complies with ADA Accessibility Guidelines.

*Caution:

Double cylinder locks on any door are a life safety hazard in times of emergency and their use is not recommended. Installation should be in accordance with existing codes only.

ADA compliant:

Schlage Lock Company offers a wide selection of locks designed to meet the Americans with Disabilities Act.

Schlage

ANSI

B560P

E0152

Single cylinder deadbolt

- Deadbolt thrown or retracted by key outside or thumbturn inside

Outside Inside



Schlage

ANSI

B561

E0162

Cylinder only x blank plate deadbolt

- Deadbolt thrown or retracted by key outside
- Blank plate with exposed screws inside

Outside Inside



Schlage

ANSI

B562P*

E0142

Double cylinder deadbolt

- Deadbolt thrown or retracted by key either side
- Not UL rated

Outside Inside



Schlage

ANSI

B563

E0172

Classroom deadbolt

- Deadbolt thrown or retracted by key outside
- Inside units retracts bolt only

Outside Inside



Schlage

ANSI

B571

-

Door bolt occupancy indicator

- Deadbolt thrown or retracted by thumbturn inside
- Outside indicator displays "In use" or "Vacant"
- Requires 1 1/2" cross bore prep
- Not UL rated
- 61-509 Emergency key included

Outside Inside



Schlage

ANSI

B580

E0192

Door bolt

- Deadbolt thrown or retracted by trim unit only
- Requires 1 1/2" cross bore prep

Outside Inside



Schlage

ANSI

B581

E01112

Door bolt with trim

- Deadbolt thrown or retracted by trim unit only
- Blank plate outside
- Requires 1 1/2" cross bore prep

Outside Inside

