

GENGUARD™ SERIES

Tough to the core™

GenGuard™ Plus 14

GenGuard™ 16

GenGuard™ 18

GenGuard™ 20



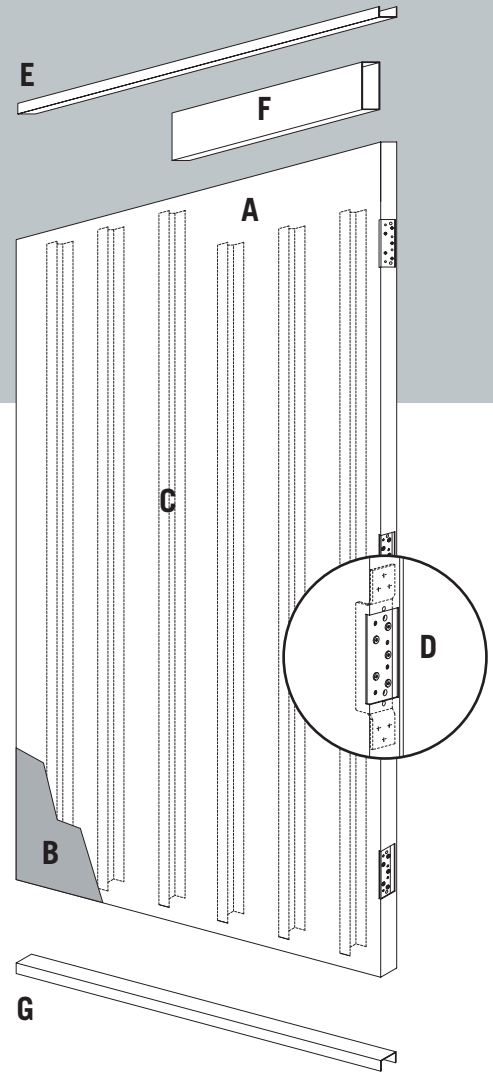
The **GenGuard Series** is designed for areas where added security is required. This Series offers more durability in conditions where resistance to abusive use is of a concern. Doors are reinforced with steel stiffeners, securely bonded to each face sheet. Contrary to most products in this category, our bonded stiffeners provides a seamless face, free of unsightly welding marks. All voids between stiffeners are filled with core material. Standard doors are 1¾ in. (45 mm) thick and are available in 14, 16, 18, and 20 gauge galvanized steel. The GenGuard Series is also available in stainless steel and G90 galvanized steel.

General Specifications

- Door faces are flush and free of any joints, welds or seams.
- Steel stiffeners are bonded to face sheets.
- Longitudinal door edges are interlocked with mechanical seam and reinforced with epoxy adhesive (seamless edge optional).
- Door edges are beveled 1/8" (3 mm) in 2" (50 mm).
- Door hinge reinforcements are prepared for standard weight 4½" x 4½" (114 mm x 114 mm) hinges which can easily be converted to accommodate heavy weight hinges.

Door Construction

- A Door face sheet (galvannealed, stainless steel, G90 galvanized steel).
- B Core (honeycomb, polystyrene, polyurethane, fiberglass, rockwool).
- C 20 gauge steel stiffeners at 6" o.c.
- D 10 gauge high frequency dual purpose hinge reinforcement with return bend for added strength. Can easily be converted to accommodate heavy weight hinges.
- E 18 gauge inverted top channel projection welded to door skins and tack welded at each corner for extra rigidity.
- F 18 gauge door closer reinforcement box.
- G 18 gauge inverted bottom channel projection welded to door skins and tack welded at each corner for extra rigidity.

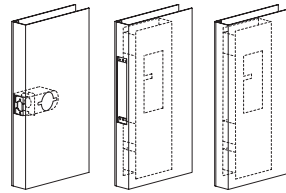


Standard Lock Preparations

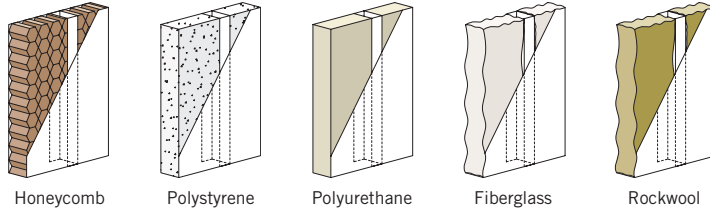
161 cylindrical lock assembly reinforcement with added barrel support projection welded to door edge, in accordance with ANSI A115.2 requirements.

86 edge mortise lock preparation reinforcement box with integrated lock support, in accordance with ANSI A115.1 requirements.

Rim panic reinforcement box for surface mounted exit device application.



Available Cores



Fire Labels

GenGuard Series fire labeled doors are approved by both Intertek Testing Services (ITS Warnock Hersey) and Underwriters Laboratories (UL) Fire Labeling Programs. Doors can be fire labeled for up to 3 hours and must be installed in an equivalent fire labeled frame with approved fire listed hardware. For fire labeling restrictions and limitations refer to Gensteel's Fire Labeling Guide for Hollow Metal Doors.

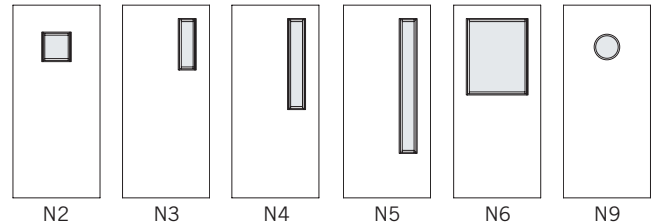


Fire Labeling Guide for Hollow Metal Doors		
Maximum Door Opening Size:		
Single Opening 4'0" x 10'0"		Double Door Opening 8'0" x 10'0"
Minimum Gauge	Rating	Allowable Glass Area
20	3 h*	Nil
20	1½ h	100 in.²
20	45 min	1296 in.²

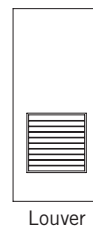
*Maximum door size for 3 h is 4'0" x 8'0" for single opening and 8'0" x 8'0" for double door opening.

Recommended Uses	Standard Duty	Medium Duty	Heavy Duty	Extra Heavy Duty
GenGuard™ Plus 14				X
GenGuard™ 16			X	
GenGuard™ 18		X	X	
GenGuard™ 20	X	X		

Lites



Miscellaneous



As a result of Gensteel's ongoing quest for improvement, technical specifications are subject to change without notice.

G-10 WARRANTY

Gensteel doors come with an unrivalled 10-year warranty against delamination.



Head Office & Manufacturing Plant
 4950 Hickmore, St. Laurent, Quebec, Canada H4T 1K6
 Toll free: **1-866-GENSTEEL (436-7833)**
 Telephone: (514) 733-3562 Fax: (514) 733-1932
 Manufacturing Plant: Cornwall, Ontario
 U.S. Manufacturing Plant: Plattsburgh, NY

www.gensteeldoors.com

™ Trademarks of Gensteel Doors

